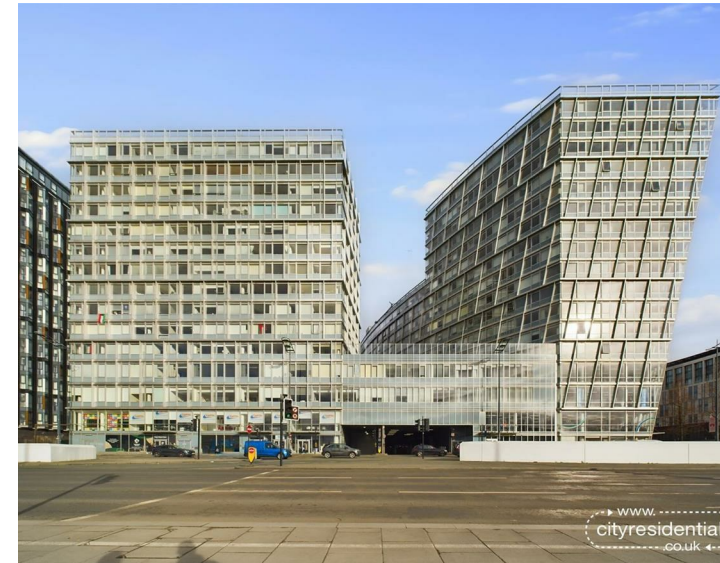


239 Parking Space, One Park West 31 Strand Street,
Asking Price £12,500 Leasehold

www.
cityresidential
.co.uk



www.
cityresidential
.co.uk

About the Property

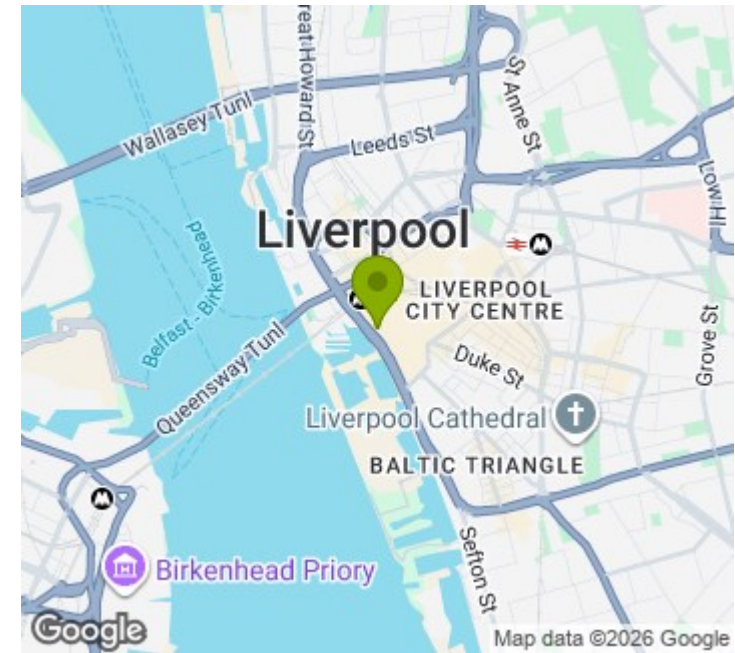
CAR PARKING SPACE AVAILABLE FOR SALE AT ONE PARK WEST - HEART OF LIVERPOOL ONE.

With Liverpool ONE and the Albert Dock either side, this really is not an opportunity to miss!

The parking space is located at One Park West and would be ideal for anyone living in the vicinity whom doesn't currently have a space with their apartment or for anyone who works in the area.

Contact us today on 0151 231 6100 with any queries.

- Parking space
- Sought after One Park West development
- Heart of Liverpool One
- Close to a range of amenities



Energy Efficiency Rating

	Current	Potential
Very energy efficient - lower running costs		
(92 plus) A		
(81-91) B		
(69-80) C		
(55-68) D		
(39-54) E		
(21-38) F		
(1-20) G		
Not energy efficient - higher running costs		
England & Wales	EU Directive 2002/91/EC	

City Residential
81/87 Victoria Street, The Old Haymarket, Liverpool L1 6DG
T: 0151 231 6100 F: 0151 231 6105
E: sales@cityresidential.co.uk



WWW.
cityresidential
.co.uk